

# Performance Composite Decking Board

## Overview

The Performance composite decking board comes in five attractive colours each with reversible grooved finishes.

- Long-lasting: will not rot, warp or twist
- Non-slip and splinter-proof
- Low maintenance: no need to treat or stain
- Class B fire rated



## Performance

Reaction to fire – EN ISO 13501-1		Bfl - s1
<b>Deviations of dimension decking profiles and support rail profiles, mm:</b>	length	± 5.0
	width	± 1.2
	total thickness	± 0.5
	top layer thickness	± 0.3
	bottom layer thickness	± 0.5
<b>Edge straightness, mm/m</b>		≤ 0.5
<b>Curvature transverse, mm</b>		≤ 0.5
<b>Falling mass impact resistance, into the top and bottom surfaces, impact energy of 7 J, temp. +23oC i -20oC</b>		no cracks in length ≥ 10 mm and a depth of indentation ≥ 0.5 mm
<b>Moisture resistance, determined decrease of bending strength under the cyclic moistening</b>		mean value ≤ 20 individual value ≤ 30
<b>Properties of decking profiles at bending (spacing of support rail profiles 400 mm):</b>	destructive force, N	mean value ≥ 3300 individual value ≥ 300
	deflection under a load of 500 N, mm	mean value ≤ 2.0 individual value ≤ 2.5
	bending strength, MPa	≥ 40
	modulus of elasticity in bending, MPa	≥ 4000
<b>Density</b>		1.35 g/m <sup>3</sup>

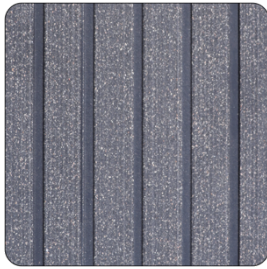
## Performance Continued

Swelling after 28 days the total immersion into water at a temperature (+20 ± 2)°C, %:	in length direction	mean value ≤ 0.4 individual value ≤ 0.6
	in width direction	mean value ≤ 0.8 individual value ≤ 1.2
	in thickness direction	mean value ≤ 5.1 individual value ≤ 5.3
Absorption after 28 days the total immersion into water at a temperature (+20 ± 2)°C, %		mean value ≤ 7.0 individual value ≤ 9.0
The coefficient of linear thermal expansion in temperature range of -20 °C to 80 °C, K-1		≤ 5 · 10 <sup>-5</sup>
Resistance to accelerated ageing after 300 h irradiation, determined by the difference of colour:	Dusk	ΔE <sub>ab</sub> * ≤ 3
	Dawn	ΔE <sub>ab</sub> * ≤ 12
	Noon	ΔE <sub>ab</sub> * ≤ 9
	Midnight	ΔE <sub>ab</sub> * ≤ 6
	Twilight	ΔE <sub>ab</sub> * ≤ 10
Slip resistance - PTV	Dry	≥ 70
	Wet	≥ 50
Ability to maintain fasteners (load capacity pull-through of fasteners), specified by:	breaking force, N	≥ 2000
	pull through strength (pull through parameter), MPa	≥ 70
Floor resistance to dynamic loads, Nm		≥ 450

## Dimensions

Code	Width	Thickness	Length
Decking Board	150mm	25mm	3000mm

## Finishes



**Midnight**



**Twilight**



**Dawn**



**Dusk**



**Noon**

## Accessories



**Edge profile**

Alternative way of capping off board ends/step treads.



**Plastic T-clip**

For a 6mm gap between boards

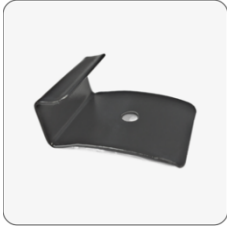


**Metal clasp**

For a 4mm gap between boards

**Accessories  
(cont.)****Decking Screw - Black**

3.9 x 30mm CK screw for Plastic T-Clips

**Starter/End Clip**

For fixing down decking at start and finish of decking areas

**Compatible Systems****TerraSmart**<sup>®</sup>

Composite Decking System

Wood-plastic composite decking  
system for outdoor spaces

**Got questions?****Speak to one of our expert advisors**

Visit [www.rynogroup.co.uk](http://www.rynogroup.co.uk) or call us today on **+44 (0)203 967 3500** or reach out on [sales@rynogroup.co.uk](mailto:sales@rynogroup.co.uk).