

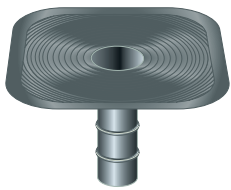
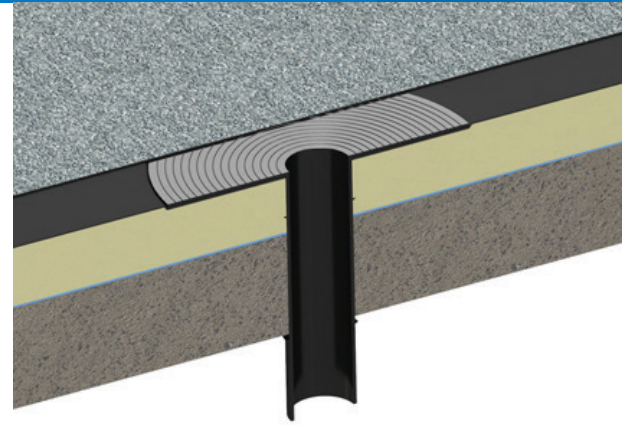
**PRODUCT DATASHEET**

# Flat Flange Outlets

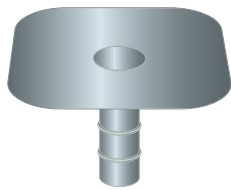
Versatile flat roof drainage outlets, available in six sizes. Made from a choice of 3 materials EPDM, PVC-u or PP.

The ribbed push-in downpipe provides a completely leakproof connection to pipework.

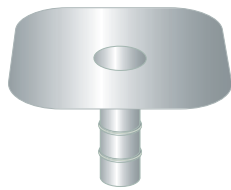
These outlets suit all forms of flat roof, and are also ideal for installation in, for example, wide valley gutters. They are highly resistant to ultraviolet, ozone and other atmospheric and chemical agents. They are suitable for use within wide temperature ranges, and remain flexible at very low temperatures. Leaf guards and gravel grates also available.



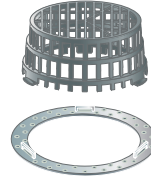
**EPDM**  
**TPF1-50, TPF2-62.5, TPF2-75, TPF2-100, TPF2-110, TPF2-150**  
 For built up felt and mastic asphalt



**PVC**  
**TPF2-75, TPF2-100**  
 For PVC membranes

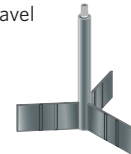


**PP**  
**TPF2-75, TPF2-100**  
 For TPO membranes



**TPF-MR**  
 Mounting ring

**TPF-LG**  
 Leaf/gravel grate

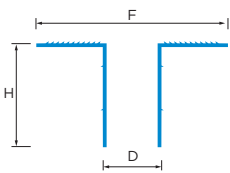


**TPF-MS**  
 Leaf guard support

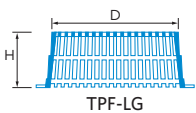


**TPF-BG**  
 Balloon guard

## SIZING



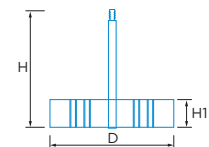
	<b>TPF1 50</b>	<b>TPF2 62.5</b>	<b>TPF2 75</b>	<b>TPF2 100</b>	<b>TPF2 110</b>	<b>TPF2 150</b>
F	245	245	300	325	335	380
H	180	250	250	250	250	250
D	50	54	66	92	100	148



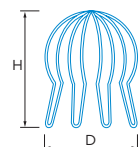
**TPF-LG**



**TPF-MR**



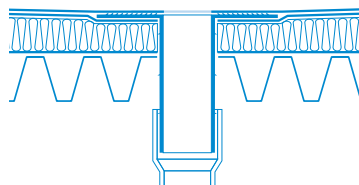
**TPF-MS**



**TPF-BG**

	<b>TPF-LG</b>	<b>TPF-MS</b>	<b>TPF-MR</b>	<b>TPF-BG</b>
H	80	160	N/A	155
D	160	195	220	145
H1	N/A	40	N/A	N/A

**TPF2-100 typical application in warm roof**



\*All measurements in mm



Castlepoint  
 Castle Way  
 Ellon AB41 9RG

01358 726000  
[sales@rynogroup.co.uk](mailto:sales@rynogroup.co.uk)  
[rynogroup.co.uk](http://rynogroup.co.uk)