

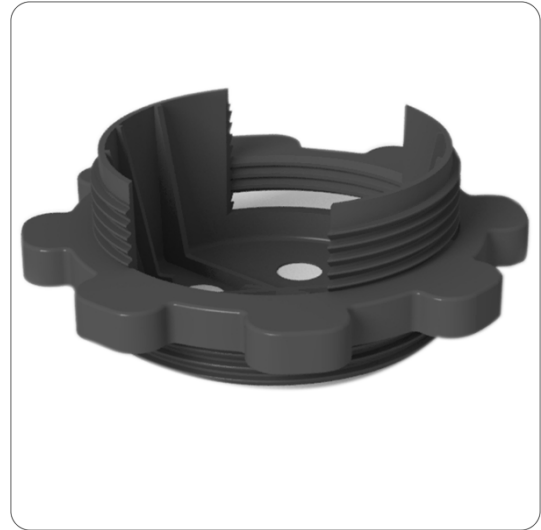
RDC

Adjustable Joist Cradles

Overview

The RDC adjustable cradle range is designed to support all conventional decking and flooring systems, both external and internal.

- Side walls locate joists quickly and prevent joists from moving
- Adjustment ring gives millimetre perfect adjustment up to a build-up of 55mm
- Finger grips enable easy adjustment



Performance

Material	Recycled Nylon (glass filled)
Height range	10mm-55mm
Compression	6kN/m ² (min. 6 cradles/m ²)
Base diameter	90mm
Bearer width capacity	44mm-50mm bearer width
Bearer/cradle connection	Loose laid
Biological/chemical	Resistant to moulds, algae, alkali, bitumen, UV
Working temperature	-30°C - 120°C
Maximum cradle spacing	600mm centre-to-centre (joist spacing 500mm max)

Sizes

Code	Adjustable height range	Compatible Joists
RDC 10-25	10-25mm	min 22mm depth
RDC 10-40	10-40mm	min below 38mm depth
RDC 10-55	10-55mm	min above 50mm depth

Compatible Systems

