

Warm Concrete Look Tocco Concrete Porcelain Paving



Designs



Earth Beige



Ash Beige



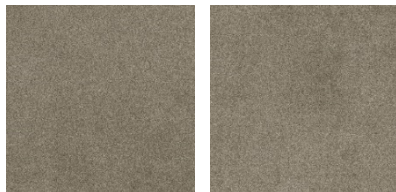
Lava Grey



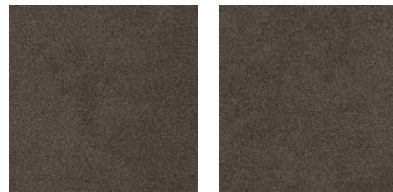
Magma Grey



Coal Grey



Clay Taupe



Basalt Taupe



Chalk White

Please note: Colour shades may differ between batches. If you need a specific batch to match a previous order for a project, please inform us when placing your order, although availability can't be guaranteed.

Dimensions & Packing Details



Weight: 44.8kg/m²

Packing Details

	Pieces X Box	Sqm X Box	Boxes X Pallet	Kg X Box	Sqm X Pallet	Kg X Pallet
60x60	2	0.72	30	33	21.6	990
60x120	1	0.72	35	33.35	25.2	1167.25
120x120	1	1.44	20	67.66	28.8	1353.2

Regularity Characteristics

Technical Features	Norms	Required Standard	Performance Value
Length and width	ISO 10545-2	± 0.6% or ± 2mm (*)	± 0.3% / ± 1mm (*)
Thickness		± 5% / 0.5mm (**)	± 5% / 0.5mm (**)
Straightness of sides		± 0.5% / ± 1.5mm (***)	± 0.3% / 0.8mm (***)
Rectangularity (Measurement only on short edges when L/l ≥ 3)		± 0.5% / ± 2mm (****)	± 0.3% / ± 1.5 mm
Surface flatness		c.c. ± 0.5% / 2mm e.c. ± 0.5% / 2mm w. ± 0.5% / 2mm	Not applicable to "strong" structures

Structural Characteristics

Technical features	Norms	Required Standard	Performance Value
Water absorption level (in% by mass)	ISO 10545-3	E ≤ 0,5% Individual Maximum 0,6%	≤0.1%
	ASTM C373-18	Requirement ANSI A137.1-2017 Water Absorption Max < 0,5%	≤0.5%

Bulk Mechanical Characteristics

Technical features	Norms	Required Standard	Performance Value
Breaking strength	ISO 10545-4	S ≥ 1300 N	S ≥10000 N
Modulus of rupture		R ≥ 35 N/mm ²	R ≥45 N/mm ²
Bending and breaking load resistance (4)(5)	EN 1339 Annex F	-	For specific values check the table below named "Physical-mechanical features in accordance with EN 1339"
Impact resistance, as coefficient of restitution	ISO 10545-5	Declared value	≥0.55
Repeated Shock Test (Installation on pedestals)	QB UPEC F+	No breakage permitted	Compliant

Surface Mechanical Characteristics

Technical features	Norms	Required Standard	Performance Value
Impact resistance, as coefficient of restitution	ISO 10545-6	≤ 175 mm ³	≤150mm ³

Thermal and Hygrometric Characteristics

Technical features	Norms	Required Standard	Performance Value
Coefficient of linear thermal expansion	ISO 10545-8	Declared value	$\leq 7\text{MK}^{-1}$
Thermal shock resistance	ISO 10545-9	Test passed in accordance with ISO 10545-1	Resistant
Moisture expansion (in mm/m)	ISO 10545-10	Declared value	$\leq 0.01\%$ (0.1mm/m)
Frost resistance	ISO 10545-12	Test passed in accordance with ISO 10545-1	Resistant

Physical Characteristics

Technical features	Norms	Required Standard	Performance Value
Bond strength/adhesion for improved cementitious adhesives	EN 1348	Declared value	$\geq 1.0 \text{ N/mm}^2$ (Class C2 - EN 12004)
Reaction to fire	-	Class A1 or A1 _{fl}	A1 - A1 _{fl}

Chemical Characteristics

Technical features	Norms	Required Standard	Performance Value
Resistance to household chemicals and swimming pool salts	ISO 10545-13	Minimum B class	A
Resistance to low concentrations of acids and alkalis		Declared class	LA
Resistance to high concentrations of acids and alkalis		Declared class	HA
Resistance to staining, for unglazed tiles	ISO 10545-14	Declared class	5

Safety Characteristics





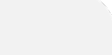
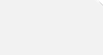
Technical features	Norms	Required Standard	Performance Value
Shod Ramp Test	DIN EN 16165 ANNEX B (EX DIN 51130)	Declared value	R11
Barefoot Ramp test	DIN EN 16165 ANNEX A (EX DIN 51097)	Declared value	A+B+C
Pendulum friction Test	BS EN 16165 ANNEX C (EX BS 7976)	PTV ≥ 36 classifies the surface as "low slip risk"	≥ 36 Dry ≥ 36 Wet
	AS 4586	Declared Classification of the pedestrian surface	Class P4
	UNE 41901 EX:2017	Declared value	Class C3
Coefficient of friction (COF)	B.C.R.A. Rep. CEC/81	- Min. Dec. 236/89 of 14/06/89 - $\mu > 0.40$ for a sliding leather element on a dry floor - $\mu > 0.40$ for a sliding hard rubber element on a wet floor	> 0.40 Dry (Asciutto) > 0.40 Wet (Bagnato)
Dynamic coefficient of friction (DCOF)	ANSI A 326,3		> 0.55 Wet

Physical-mechanical features in accordance with EN 1339

Technical features	EN 1339 standard	Performance Value
Water absorption	Annex E	$< 0.1\%$
Bending strength / Breaking load	Annex F	Marking \geq T11 60x60 Marking \geq U4 60x120 Marking \geq T11 120x120
Frost resistant in the presence of defrosting salts	Annex D	Resistant

- (•) Anti-slip performance is guaranteed at the time of delivery of the product.
- (*) The permissible deviation, in % or mm, of the average size for each tile (2 or 4 sides) from work size (W).
- (**) The permissible deviation, in % or mm, of the average thickness for each tile from the work size thickness (W).
- (***) The maximum permissible deviation from straightness, in % or mm, related to the corresponding work sizes (W).
- (****) The maximum permissible deviation from rectangularity, in % or mm, related to the corresponding work sizes (W).
- c.c. The maximum permissible deviation from centre curvature, in % or mm, related to the diagonal calculated from the work sizes (W).
- e.c. The maximum permissible deviation from edge curvature, in % or mm, related to the corresponding work sizes (W).
- w. The maximum permissible deviation from warpage, in % or mm, related to the diagonal calculated from the work sizes (W).

Compatible Systems

 <p>BalcaSmart® Pedestal Paving System</p> <p>Straightforward, robust paving system for metal-frame balconies</p>	 <p>BalcaSmart® Rail Paving System</p> <p>Premium, versatile paving system for waterproofed substrates</p>	 <p>TerraSmart® Pedestal Paving System</p> <p>Straightforward, robust paving system for waterproofed substrates</p>
 <p>TerraSmart® Rail Paving System</p> <p>Premium, versatile paving system for waterproofed substrates</p>	 <p>TerraSmart® Pedestal Paving System</p> <p>Straightforward, robust paving system for waterproofed substrates, where non-combustibility isn't required</p>	 <p>TerraSmart® Rail Paving System</p> <p>Premium, versatile paving system for waterproofed substrates, where non-combustibility isn't required</p>

Got Questions?

Visit www.rynogroup.co.uk or call us today on **+44 (0)203 967 3500** or reach out on sales@rynogroup.co.uk.