

PRODUCT DATASHEET



Aluminium Decking System for Balconies

Fully non-combustible aluminium decking system designed to be attached to projecting/cantilever or bolt-on balconies. Achieves Euroclass A2_{FL}-s1 and A2-s1 d0 fire rating. Comprised of aluminium deck boards, joists and support cleats.

- Manufactured entirely from corrosion-resistant aluminium alloy 6063
- 30 year warranty, 60 year design life
- Powdercoated with Interpon D1036 Textura coating for unbeatable slip resistance
- Excellent scratch and wear resistance, even in areas of high foot-traffic
- Attaches directly to balcony frame
- Boards available in any RAL colour

ADB ALUMINIUM DECK BOARD

- Two deck board profiles available to suit differing span requirements
- Powder-coated in any standard RAL colour
- High quality board, will not dent easily
- Interpon D1036 Textura coating ensures scratch-resistance/durability
- No maintenance required

HIDDEN FIXING SYSTEM

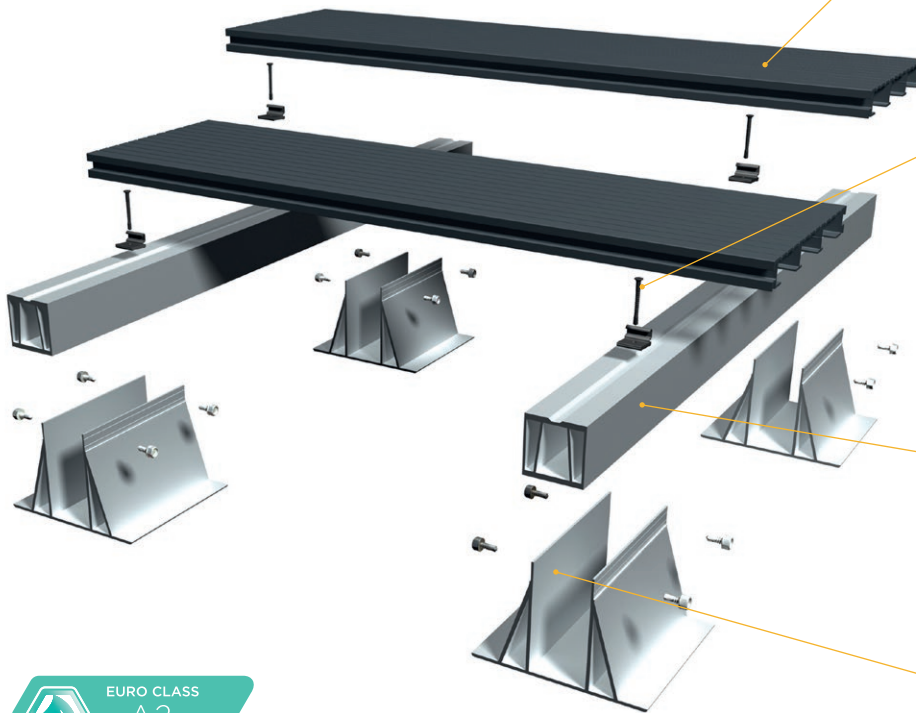
- Comprised of snap-on AluClip™ (patent pending: GB2009927.1) and screw
- Fixes boards via clamp mechanism, allowing thermal expansion/contraction of boards
- Creates a 7mm gap between boards for efficient drainage
- Black powder-coated
- Allows boards to be removed and replaced for balcony install/maintenance access

ADS ALUMINIUM JOIST

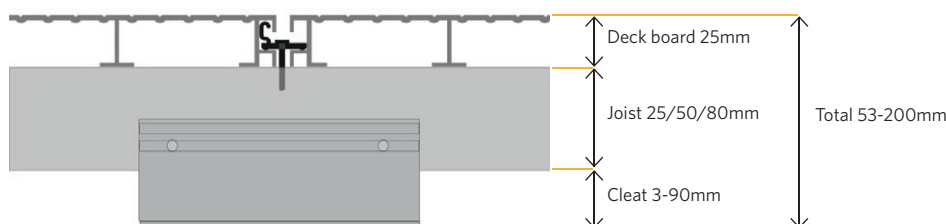
- Three joist depths available to suit different applications
- Manufactured from incredibly strong and lightweight aluminium
- Large allowable spans
- Available in mill finish or powder-coated

ADC ALUMINIUM SUPPORT CLEAT

- Attach directly to balcony frame
- Height adjustable to cater for falls or to meet door thresholds
- Large base spreads weight evenly



SYSTEM HEIGHT OVERVIEW



Castlepoint
Castle Way
Ellon AB41 9RG

01358 726000
sales@rynogroup.co.uk
rynogroup.co.uk

PRODUCT DATASHEET



Aluminium Decking System for Balconies

TECHNICAL SPECIFICATION

Allowable load	Uniformly distributed >4.0kN/m ² , Concentrated 2kN
Aluminium grade	6063 T6
Biological/chemical	Resistant to moulds, algae, alkali, bitumen, UV
Board coating	Interpon D1036 Textura Powdercoating (achieves Qualicoat Class 1 Standard for coatings of Architectural Aluminium)
Coefficient of Linear Thermal Expansion	0.023mm/m/°C
Reaction to Fire (to EN13501-1)	A2 _{fl} -s1 and A2-s1 d0
Scratch resistance (Furniture Leg Report)	No damage identified. Very slight transfer of brass with 100kg applied mass (board finish/surface unaffected)
Slip resistance (Pendulum Test)	PTV (Dry) 59, PTV (Wet) 43
Wear resistance (Footfall Report)	No wear identified. Very slight sole marking at 50,000 footfalls (board finish/surface unaffected)

FIXINGS



AluClip™

Hidden clip for fixing down deck boards to joist
Aluminium Alloy T6
Patent pending: GB2009927.1



Decking Screw

3.9 x 30mm self-drill decking screw for AluClip™
Stainless steel A4 316



Starter/End Clip

For fixing down decking at the start & finish of areas
Stainless Steel 201



Cleat/Joist Screw

4.2 x 13mm MX8 screw for fixing joist to pedestals
Stainless steel A2 304

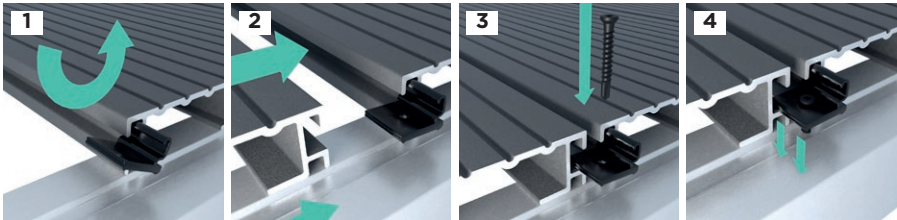


Side Termination Profile
For terminating cut boards at edge of decking
Aluminium 6063



End Termination Profile
For terminating board ends
Aluminium 6063

ALUCLIP™ RAPID FIXING METHOD

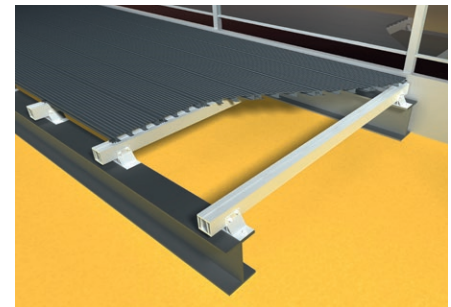


1
Clip onto side of board and snap into place by pressing on edge

2
Slide next board until it touches edge of clips (creates 7mm gap)

3
Fix in place using 30mm Decking Screws as shown

4
Clamp mechanism allows for natural expansion/contraction of metal



BUILD-UP AND SPAN CAPABILITIES

Component	Product	Height	Width	Stock lengths	Span
ADB deck board	ADB80	25mm	200mm	Available in 3.2m, 3.6m, 4.2m, 4.8m or 6m lengths	800mm
	ADB60				600mm
ADS Joist	ADS25	25mm	50mm	Supplied in 3.6m lengths as standard	Up to 600mm
	ADS50	50mm			Up to 1250mm
	ADS85	85mm			Up to 1700mm
ADC Cleat	ADC1	3-15mm	Base dimensions 150 x 150mm as standard, 150 x 75mm available to suit balcony steels		
	ADC2	3-28mm			
	ADC3	3-40mm			
	ADC4	17-90mm			



Castlepoint
Castle Way
Ellon AB41 9RG

01358 726000
sales@rynogroup.co.uk
rynogroup.co.uk