

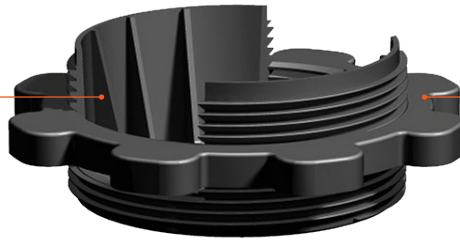
PRODUCT DATASHEET

RDC Adjustable Joist Cradles

The RDC adjustable cradle range is designed to support all conventional decking and flooring systems, both external and internal.

SIDE WALLS

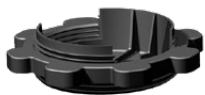
- Locate joists quickly and simply
- Prevent joist from moving



ADJUSTMENT RING

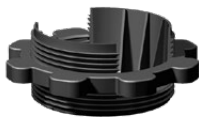
- Allows millimetre perfect adjustment
- Allows height to be built up to 55mm
- Ergonomic finger grips enable easy adjustment

THE RANGE



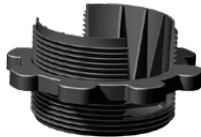
RDC 10-25

- Adjustable between 10 and 25mm
- For joists below in 25mm depth



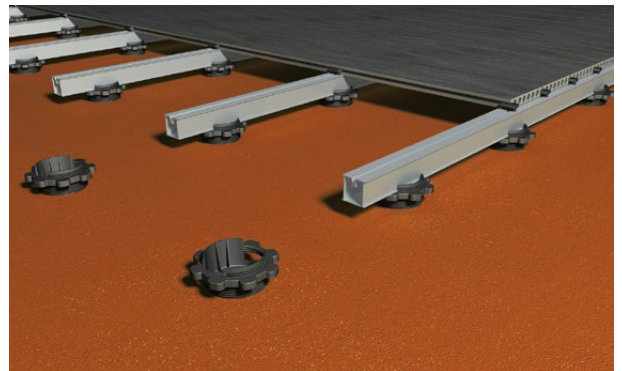
RDC 10-40

- Adjustable between 10 and 40mm
- For joists below 50mm in depth



RDC 10-55

- Adjustable between 10 and 55mm
- For joists above 50mm in depth



OPTIONAL COMPONENTS



Foam Base Pad

- Adhesive backed
 - Reduces noise
 - Evenly spreads load
 - Protects membranes
- 5mm x 90mm

TECHNICAL SPECIFICATION

Material	Recycled Nylon (glass filled)
Height range	10mm to 55mm
Compression	6kN/m ² (min. 6 cradles/ m ²)
Base diameter	90mm
Bearer width capacity	44mm to 50mm bearer width
Bearer/cradle connection	Loose laid
Biological/chemical	Resistant to moulds, algae, alkali, bitumen, UV
Working temperature	-30°C to 120°C
Cradle spacing	600mm centre-to-centre (joist spacing 500mm max)



Castlepoint
Castle Way
Ellon AB41 9RG

01358 726000
sales@rynogroup.co.uk
rynogroup.co.uk