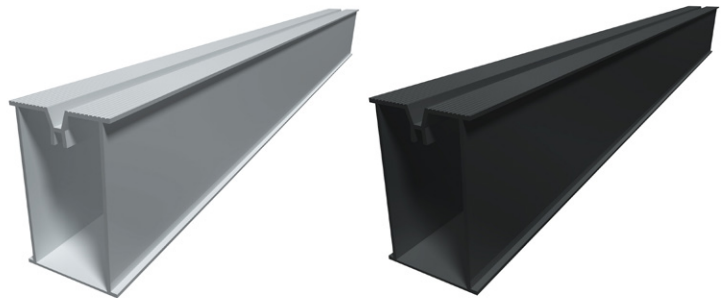


PRODUCT DATASHEET

DS72 Aluminium Decking Joist

The DS72 aluminium joist has been designed to support all conventional decking systems.

- Supports decking boards as low as 75mm, and as high as 1072mm
- Simple design - rapid installation
- Compatible with RynoDeckSupport pedestals and cradles
- Supports any type of conventional decking boards - softwood, hardwood, composite, PVC
- Powdercoating and anodising options available
- Supplied in 3.6m lengths as standard, bespoke and pre-cut lengths available to special order.



ADDITIONAL COMPONENTS



DS-SC
Straight Joist
Connector



DS-AC
Angle Joist
Connector 90°



DS-AC
Angle Joist
Connector 135°



DS-VC
Perimeter/Fascia
Profile Bracket



DS-BB
Ballast Bracket



DS-GA
Ground Anchor



DS-SSDS-38
Stainless Steel
Decking Screw for
Plastic Clips



DS-SSDS-19
Stainless Steel
Decking Screw for
Metal Clips



DS-SSJS
Stainless Steel
Joist Screw for
Joist Connectors

TECHNICAL SPECIFICATION

Material	Aluminium alloy 6063
Joist dimensions	Width: 48mm, Height: 72mm, Length: 3600mm
Temper	T6
Finish	Mill finish or powder coated to RAL 9005 (black)
Support height	75 - 1072mm (when used in conjunction with RynoDeck pedestals/cradles)
Fire rating	"Non-combustible", achieving a Class 1 surface spread of flame to BS476: Part 5
Allowable load (uniformly distributed)	> 4.0 kN/m ² (further data available on request)
Allowable load (concentrated)	1.4 kN (further data available on request)
Supporting pedestals / cradles	See systems 2, 3 and 4 for technical specifications
Allowable joist span between support points	1200mm
Joist screw spec	DS-SSJS 4.2 x 13mm stainless steel A2, square drive pan-head, self-drilling
Decking screw spec	DS-SSDS-19 3.9 x 19mm stainless steel A2, square drive countersunk head, self-drilling
	DS-SSDS-38 3.9 x 38mm stainless steel A4, chemi-black finish, square drive countersunk head, self-drilling



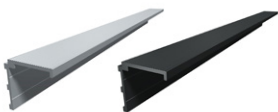
Self-levelling pedestal
For areas with a gradient/fall. Comes with 'click' head, for use with Ryno DS aluminium joists. See system 2 for size range.



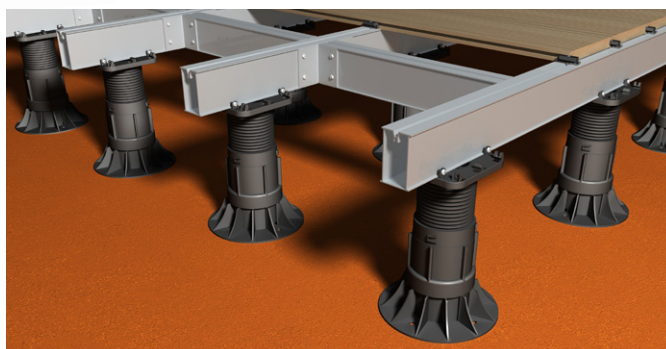
Fixed head pedestal
For flat areas. Comes with universal joist head, compatible with any joist including Ryno DS aluminium joists. See system 3 for size range.



Joist cradle
For lower height applications. Adjustable and fixed height options available. See system 4 for options.



DS-PF
Perimeter/Fascia Profile
Finish: Mill finish or powder coated



Castlepoint
Castle Way
Ellon AB41 9RG

01358 726000
sales@rynogroup.co.uk
rynogroup.co.uk